



## KWAZULU-NATAL PROVINCE

TRANSPORT  
REPUBLIC OF SOUTH AFRICA

## DIRECTORATE

Street Address: 24 John Ross highway, Eshowe, 3815

Transport Infrastructure and District Services

Tel: 033 474 2031

Fax: 035 474 4630

Email: [Nellie.Zikalala@Kzntransport.gov.za](mailto:Nellie.Zikalala@Kzntransport.gov.za)

Website: <http://www.kzntransport.gov.za>

### **BRIEFING NOTES FOR THE BETTERMENT AND REGRAVELLING OF D2475 FROM KM 0+00 TO KM 3.50 IN NKANDLA LOCAL MUNICIPALITY**

TENDER NUMBER: CONTRACT NO. ZNB00604/00000/00/ESH/INF/21/T: THE BETTERMENT AND REGRAVELLING OF D2475 FROM KM 0+00 TO KM 3+500 IN NKANDLA LOCAL MUNICIPALITY

Tender documents will be available at no cost in the electronic format downloadable from KZN Department of Transport website [www.kzntransport.gov.za](http://www.kzntransport.gov.za)

#### **Welcome and introduction**

Queries relating to issues arising from these documents may be addressed to the following:

ALL ENQUIRIES				
	Project	Contact Person	Email Address	Telephone
TECHNICAL	D2475	N.H. Zikalala	<a href="mailto:Nellie.zikalala@kzntransport.gov.za">Nellie.zikalala@kzntransport.gov.za</a>	+27 35 474 2031
SCM		N.C. Nxumalo	<a href="mailto:Ntombenhle.nxumalo@kzntransport.gov.za">Ntombenhle.nxumalo@kzntransport.gov.za</a>	+27 35 474 2031

TENDER CLOSING DATE ON FRIDAY, 13 AUGUST 2021 AT 11H00 AM.

## **OVERVIEW**

### **TENDER SECTION**

PART T1: TENDERING PROCEDURE

PART T2: RETURNABLE DOCUMENTS

### **CONTRACT SECTION**

PART C1: AGREEMENTS AND CONTRACT DATA

PART C2: PRICING DATA

PART C3: SCOPE OF WORKS

PART C4: SITE INFORMATION

## **PART T1: TENDERING PROCEDURES**

### **T1.1: TENDER NOTICE AND INVITATION TO TENDER**

#### **Contract Number. ZNB00604/00000/00/ESH/INF/21/T: THE BETTERMENT AND REGRAVELLING OF D2475 FROM KM 0 TO 3.5 KM IN THE NKANDLA LOCAL MUNICIPALITY**

The Province of KwaZulu-Natal, Department of Transport, invites tenderers from contractors experienced in roadworks for **THE BETTERMENT AND REGRAVELLING OF D2475 FROM KM 0 TO 3.5 KM IN THE NKANDLA LOCAL MUNICIPALITY**. This project is in the Province of KwaZulu Natal in Nkandla Local Municipality within the King Cetshwayo District Municipality. The duration of this project is 05 months.

Only tenders that justify the eligibility criteria stipulated in Clause C2.1 of the Tender Data are eligible to have their tenders considered.

It is estimated that tenderers must have a CIDB contract grading designated 3CE or higher

Tenderers shall be required to demonstrate that they will have in their employ during the contract period the necessary personnel satisfying the requirements of the Scope of Work for labor-intensive competencies for management and supervisory personnel.

Preferences are offered to tenderers who comply with the requirements stipulated in clause C.3.11.1 of the Tender Data.

There will be No Tender Briefing for this tender but briefing notes will be available for downloading to aid tenderers in completing the documents.

Tender documents can be downloaded from the Departmental website at [www.kzntransport.gov.za](http://www.kzntransport.gov.za)

#### **Queries relating to this tender may be addressed to:**

<b>Bidding procedure enquiries</b>	<b>Technical enquiries: Cost Centre Eshowe</b>	<b>Technical enquiries: Area Office Eshowe</b>
Mrs N C Nxumalo Telephone: 035 474 2031 Department of Transport	Mrs. N.H. Zikalala Telephone: 035 474 2031 Department of Transport	Mr Themba Nkosi Telephone: 035 474 1168 Department of Transport

The closing time for receipt of tenders is 11:00 on Friday 13 August 2021 at Department of Transport, Cost Centre Eshowe.

#### **DOCUMENTS SHOULD BE DEPOSITED IN THE TENDER BOX SITUATED AT**

<b>Main Entrance: Reception Area: DEPARTMENT OF TRANSPORT COST CENTRE ESHOWE</b>
<b>24 JOHN ROSS HIGHWAY</b>
<b>ESHOWE</b>
<b>3815</b>

**Telegraphic, telephonic, telex, facsimile, electronic, e-mail and late tenders will not be accepted.**

**TENDERING AND PROCEDURES**  
**T1.2: TENDER DATA**

**CONDITIONS OF TENDER**

The conditions of tender are the standard conditions of tender contained in Annex C of the Construction Industry Development Board Standard for Uniformity in Engineering Construction Works Contracts, published in Government Gazette No. 42622 dated 08 August 2019

**TENDER DATA**

Then standard conditions of tender make several references to the tender data for details that apply specifically to this tender. The tender data shall have precedence in the interpretation of any ambiguity or inconsistency between the tender data and the standard condition of tender.

CLAUSE NUMBER	TENDER DATA
C2.1	<p>The Employer is The KZN Department of Transport:  The Employer’s address for communication relating to this project is:  Eshowe Cost Centre  24 John Ross Highway  Eshowe  3815</p> <p>Only those tenderers who satisfy the following criteria are eligible to submit tenders.</p> <ul style="list-style-type: none"> <li>a) Contractor grading designation equal to or higher than 3 or Higher for CE</li> <li>b) Registered on the Central Suppliers Data Base</li> </ul>
C2.13	Tender offers shall be submitted as an original hard copy on Eshowe Cost Centre, 24 John Ross Highway, Eshowe, 3815
C2.15	The closing time for submission of tender is <b>11:00 on Friday 13 August 2021</b>
C2.16	The tender offer validity period is <b>12 weeks</b> from the closing date /time for submission of tenders
C3.4	<p>Tender opening</p> <p>The time and location for opening of the tender submission are:</p> <p>Time: 11h00  Date: Friday 13 August 2021</p> <p>Location\Venue: Eshowe Cost Centre, 24 John Ross Highway, Eshowe, 3815</p>
C3.13	(e ) The legal requirements for acceptance of tender offer are:

	<p>(i) The tenderer or any of its principals is not listed on the register of Tender Defaulters in terms of Prevention and Combating of Corrupt Activities Act of 2004 as a person prohibited from doing the business with public sector.</p> <p>(ii) The Tenderer has not abused the Employers Supply Chain Management System.</p> <p>(iii) The Tenderer has indicated and declared whether a spouse, child or parent of the Tenderer is in the service of the State.</p> <p>(iv) The Employer is satisfied that the Tenderer or any of his principals have not influenced the tender offer and acceptance.</p>
--	--

## **PART T2: RETURNABLE DOUMENTS**

- a) Returnable Schedule inn T2.2
- b) C1.1 form of offer and Acceptance, C1.1.1: Offer, on page C3
- c) Contract specific data Provided by the contractor in C1.2.3
- d) Pricing data in C2.2 Bill of Quantities.

### **T2.2: Returnable Schedule**

#### **Notes to tender:**

1. **Returnable schedule have been based on The CIDB standard for uniformity in Construction Procurement and incorporates National Treasury requirements within them (SBD forms.** Returnable schedule are separated into the following categories:
  - i) Forms, certificates and schedules for completion by the tenderer for use in the quantitative and qualitative **evaluation of the tender** C1.1 form of offer and acceptance, C1.1.1: Offer on page C3.
  - ii) A list of any other returnable document for completion by the tenderer and which will subsequently be **incorporated into contract**
2. Failure to fully complete the relevant returnable documents shall render such a tender offer to be declared non responsive. SBD forms with a watermark not applicable should be ignored
3. Tenderers shall note that their signatures appended to each returnable form represents a declaration that the vouch or the accuracy and correctness of the information provided, including the information provided by the candidates proposed for the specified key positions.
4. Notwithstanding any check or audit conducted by or on behalf of the employer, the information provided in the returnable documents is accepted in good faith and as justification for entering into a contract with a tenderer. If subsequently any information is found to be incorrect such discovery shall be taken as wilful misrepresentation by the tenderer to induce the contract.

A	CERTIFICATE OF ATTENDANCE AT CLARIFICATION MEETING (N/A).....	T13
B	RECORD OF ADDENDA TO TENDER DOCUMENTS .....	T14
C	COMPULSORY ENTERPRISE QUESTIONNAIRE .....	T15
D	STANDARD BIDDING DOCUMENTS .....	T16
	SBD 1: INVITATION TO BID .....	T16
	SBD 4: DECLARATION OF INTEREST .....	T18
	SBD 6.1: PREFERENCE POINTS CLAIM FORM IN TERMS OF THE PREFERENTIAL PROCUREMENT REGULATIONS 2017 .....	T22
	SBD 8: DECLARATION OF BIDDER'S PAST SUPPLY CHAIN MANAGEMENT PRACTICES.....	T26
	SBD 9: CERTIFICATE OF INDEPENDENT BID DETERMINATION .....	T28
E	B-BBEE STATUS LEVEL VERIFICATION CERTIFICATE .....	T30
F	CERTIFICATE OF AUTHORITY FOR SIGNATORY .....	T31
G	CONSTRUCTION EXPERIENCE .....	T32
H	KEY PERSONNEL .....	T33
I	CONSTRUCTION EQUIPMENT .....	T36
J	PROPOSED SUBCONTRACTORS .....	T37
K P	ARTICIPATION IN JOB CREATION USING LOCAL LABOUR .....	T38
L	HEALTH AND SAFETY DECLARATION .....	T40
M	DEVIATIONS AND QUALIFICATIONS .....	T42

NOTE: The Tenderer is required to complete each schedule and form listed above to the best of his ability as the evaluation of tenders and the eventual contract will be based on the information provided by the Tenderer. Failure of a Tenderer to complete the schedules and forms to the satisfaction of the Employer may lead to rejection on the grounds that the tender is non-responsive.

## PART C1: AGREEMENT AND CONTRACT DATA

### Part C1: Agreement and contract data

#### C1.1.1 Form of Offer

- Ensure that **amount in words** corresponds with **amount in figures** on the pricing schedule
- Ensure that the form of offer is signed by **authorised person** and one **witness**.

#### C1.1.2 Form of Acceptance

- Ensure that Form of Acceptance is signed by authorised person and one witness.
- Ensure that schedules of deviations is fully completed signed by authorised person and one witness

#### C1.3.2 CONTRACT DATA: INFORMATION PROVIDED BY THE CONSULTANT

Clause	Contract Data
5.14.1	The Requirements for achieving Practical Completion are as stated in General Conditions of The Contract
SCC 6.2.1	The Security to be provided by the Contractor shall be: Fix Performance Guarantee of 8% of the first one million rand plus 3.5% of the balance of the contract Cum.
6.10.3	The percentage retention on the amounts due to the contract is 10%.
8.6.1.3	The limit of indemnity for liability insurance is R2 000 000.00 (Two million Rand Only) for any single liability claim for projects with a duration shorter than 6 month and a project value less than R 5 000 000.00 (five million rand only).
10	<b>CLAIMS AND DISPUTES</b>
10.5.2	Disputes shall be referred to ad-hoc adjudication.
10.5.3	The number of adjudication board members to be appointed shall be one.
10.8.1	Unresolved disputed shall be determined by court proceedings.

## **PART C2: PRICING DATA**

### **C2.2: BILL OF QUANTITIES**

**Refer to schedule A: Roadworks**

## **PART C3: SCOPE OF WORKS**

### **C3 SCOPE OF WORKS**

- This section covers matters that relate to the project as a whole. Matters covered by the general and/or Particulars Conditions of Contract are not repeated in this section, except to provide more detailed information.

### **C3.1 STANDARD SPECIFICATIONS**

The standard specifications on which this contract is based are the ‘**Standard Specifications for Road and Bridge Works for South African Road Authorities (COTO), Draft Standard (DS), October 2020**

### **C3.2 PROJECT SPECIFICATIONS**

## **PART A: GENERAL**

### **1.1 Employers objective**

#### **1. DESCRIPTION OF WORKS**

The objective of the project is to re-gravel of D2475 from km 0 to 3.5 km. There is no gravel left on the current surface and is slippery when it rains the road requires new gravel surface layer to be placed. This Project forms part of the Province of KwaZulu-Natal Department of Transport’s upgrade of existing gravel roads and drainage improvement for the purpose of generating employment to surrounding areas.

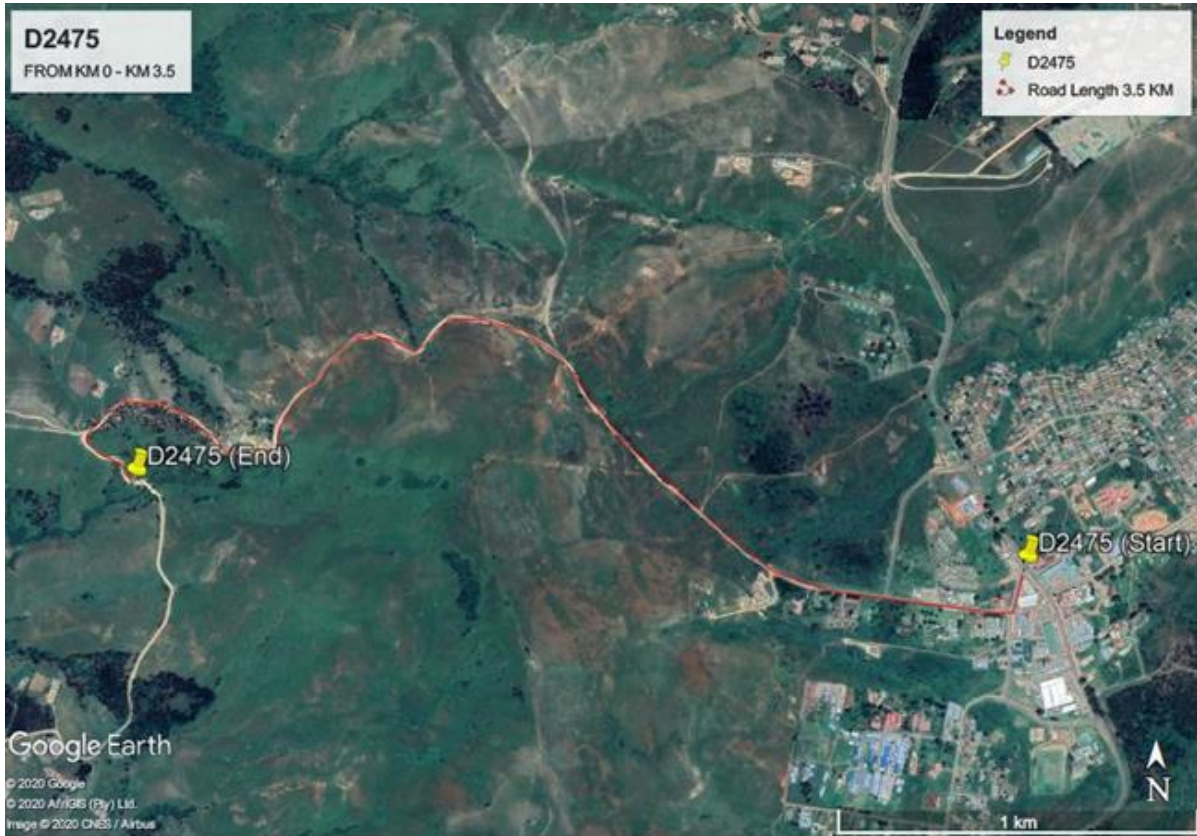




## 1.2 Location of the work

The work is located about 99km North East of Eshowe along P50/2, D2475 connects with P50/2 at km 50 towards at Nkandla Local Municipality in Ward 11. The site of the works is located at 50+00 of Main Road P50/2 and works start at km 0 of D2475.

**The GPS Co-ordinates are S 28°37'10.66" E 31°05'25.76"**



### 1.3 Overview of the works

The Works to be carried out include the following main activities:

- Establishment on site,
- Provision of traffic accommodation facilities,
- Roadbed preparation,
- Excavation of drains
- Pavement layers of 300 mm gravel compacted 95 % mod AASHTO,
- Pitching, Stonework and Protection against Erosion,
- Installation of Road Signs,
- Finishing Road reserve

### 1.4 Extent of the works

A brief detail of the works for which this specification is applicable is as follows:

Roadworks

(a) The design pavement structure is summarized in the following table

Layer	Thickness (mm)	TRH 14 Code	Description	Compaction (%)
Gravel Wearing Course	150	-	Gravel Selected from road prism or local borrow pit	95% Mod AASTO

(b) Material sources and quantities

Description	Source
Gravel Wearing Course 150mm	Gravel selected from road prism or local borrow pit

#### 1.5.1 Access to the Site

Please refer to the Locality Map (C4.1).

Access to the Site of the works is located at 50+00 of Main Road P50/2 and works start at km 0 of D2475.

#### 1.5.6 Material sources, spoil and stockpile areas

The G7 material for the gravel wearing course shall be obtained from the borrow pit nearest to the road, located approximately 5+00km from the access to site.

#### 1.5.7 Testing of material

The Contractor shall carry out at his own cost the required process control testing as specified in terms of the Standard Specifications for Road and Bridge Works for South African Road Authorities (COTO), Draft Standard (DS), October 2020.

### 1.10 Contractors campsite (Project Specification)

The Contractor shall make his own arrangements for the provision of his campsite and housing for construction personnel but the chosen site shall be subject to the approval of the Employer's Agent, the local authorities and, where applicable, the Project Liaison Committee (PLC) associated with the project.

The standard of the Contractor's camp, offices, accommodation, ablution, and other facilities must comply with the requirements of all local authority, environmental and industrial regulations concerned. In establishing and maintaining his campsite, due cognisance is to be taken of the requirements of clause A1.3.3 of the Standard Specifications for Road and Bridge Works for South African Road Authorities (COTO), Draft Standard (DS), October 2020.

### **1.12 Construction Programme**

The Contractor shall submit a detailed time programme in accordance with clause 5.6.2 of the General Conditions of Contract 2015, clause A1.2.7 of the Standard Specifications for Road and Bridge Works for South African Road Authorities (COTO), Draft Standard (DS), October 2020.

### **5.7 Daily Records**

A site diary is to be compiled jointly by the Construction Manager and the Employer's Agent's Representatives on site and is to be agreed and signed by both parties. The original signed copy is to be retained by the Employer's Agent's Representative.

The Contractor is to keep daily records of people and equipment on site in a format to be agreed by the Employer's Agent's Representative and is to provide copies to the Employer's Agent's Representative when requested.

### **5.8 Payment Certificate**

Details of measurements, proof of payment for items contained in provisional sums and prime cost sums, proof of ownership of Plant and materials on site and documentation pertaining to contract price adjustment and special materials, are required as substantiation of claims for payment.

### **5.11 Submission of reports**

The contractor shall submit monthly reports in accordance with the specifications in Part E: Expanded Public Works Programme and Part F: Small Contractor Development.

## **C4: SITE INFORMATION**

Main Road D2475 is in KZ286 within DC28, the site of the works is located at 50+00 KM of Main Road P50/2 and works commence at km 0.00 on road D2475.